

LA RECHERCHE SUR LES BIO-MARQUEURS POUR PERSONNALISER LE TRAITEMENT ANTI-CANCÉREUX

MARK BASIK MD, CENTRE DE CANCER SEGAL
HOPITAL JUIF GENERAL, UNIVERSITE MCGILL

BIOMARQUEURS

Biomarqueur: une caractéristique objectivement mesurable comme indicateur d'un processus pathogénique ou de la réponse pharmacologique aux traitements

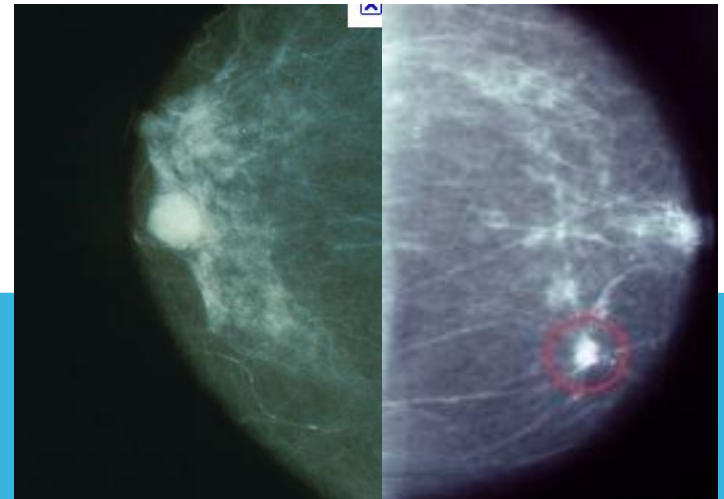


BIOMARQUEURS: POURQUOI?

Les cancers sont différents d'une personne à l'autre

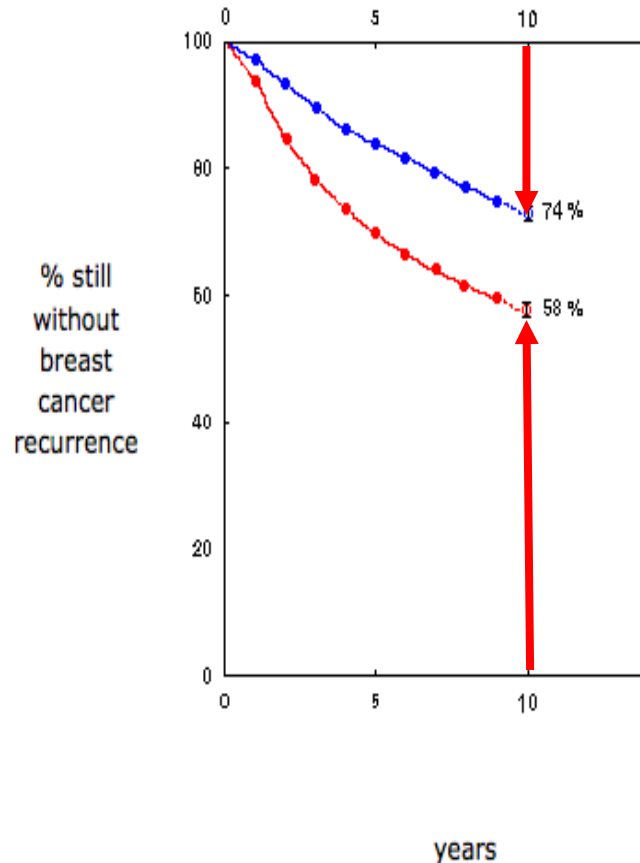
L'hôte (la personne avec le cancer) est différente d'une autre personne

POURQUOI TRAITER TOUT LE MONDE DE LA MEME FAÇON?????????



LES BIOMARQUEURS: POURQUOI?

Récepteurs hormonaux: le biomarqueur le plus connu pour le tamoxifène




~5 years of TAMOXIFEN

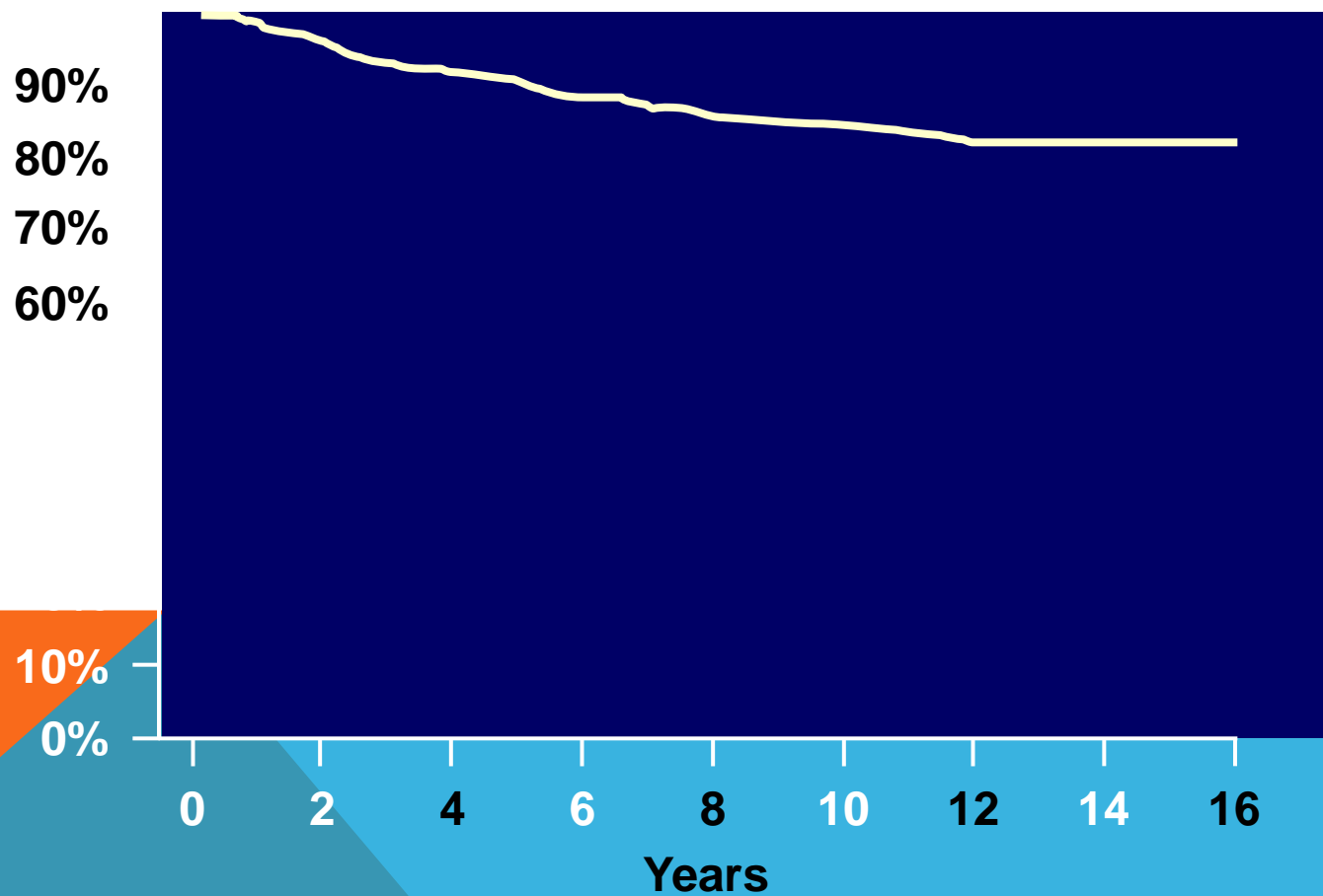
CONTROL (no tamoxifen unless disease recurs)

7400 women: 16% difference in breast cancer recurrence (with SD 1.2)
P < 0.00001

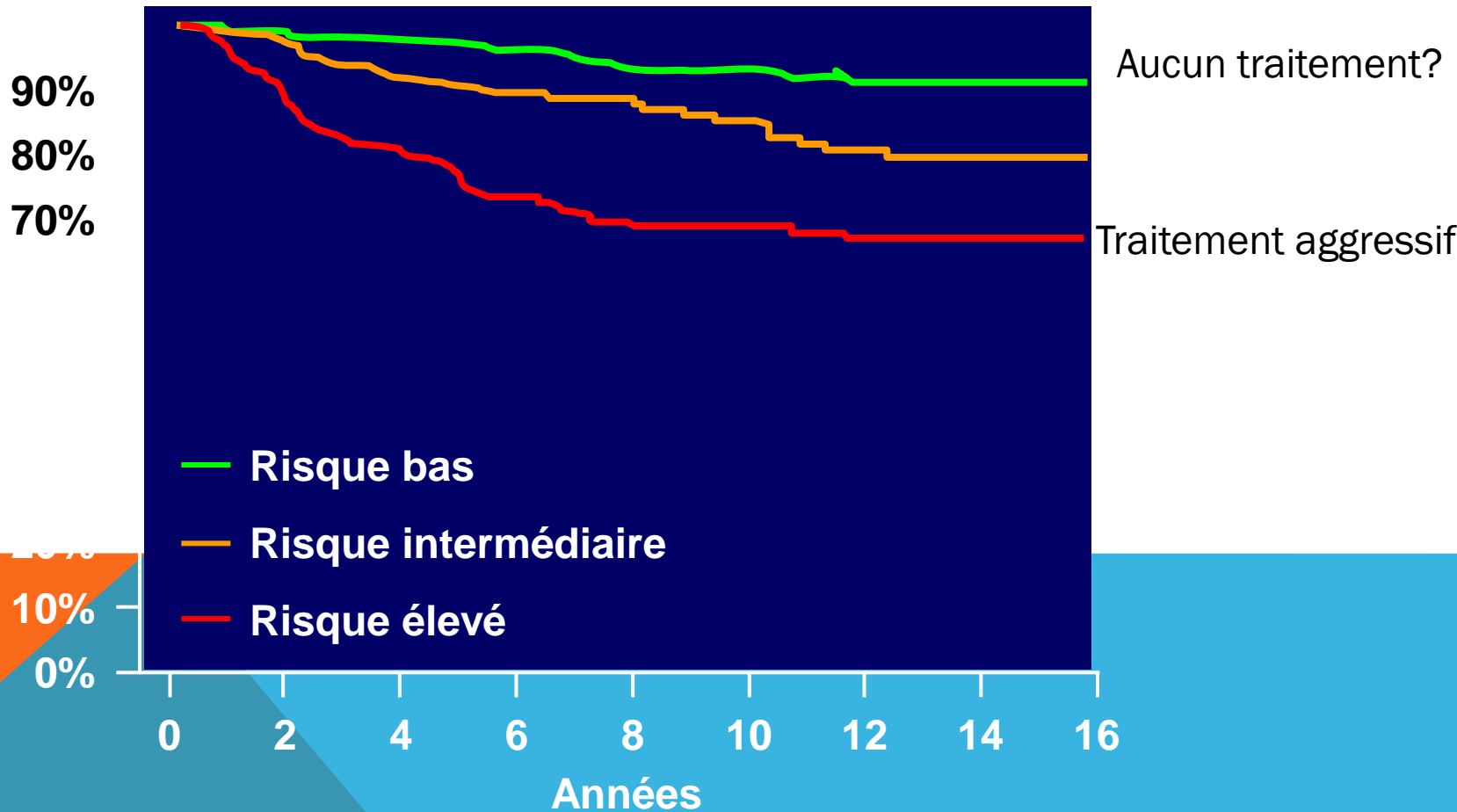
BIOMARQUEURS: AVANTAGES DE LA SÉLECTION

1. Choisir les patient(e)s qui vont vraiment bénéficier d'un traitement
 2. éviter les toxicités chez les patient(e)s qui ne répondront pas au traitement
 3. sauver du temps précieux: ne pas gaspiller du temps avec des traitements non-efficaces
 4. sauver des coûts
- 

SURVIE DES CANCERS DU SEIN



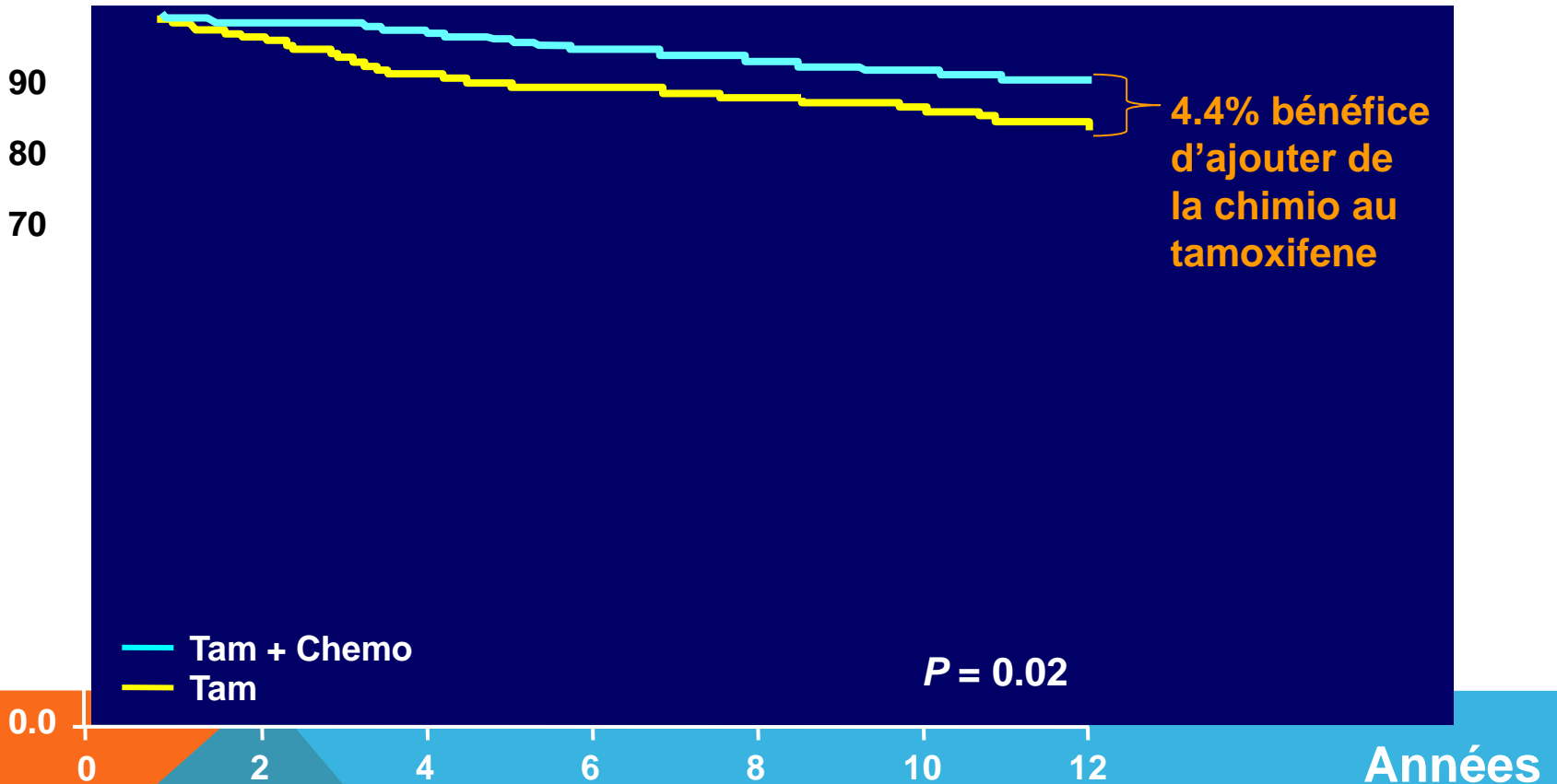
VALEUR D'UN BIOMARQUEUR PRONOSTIQUE



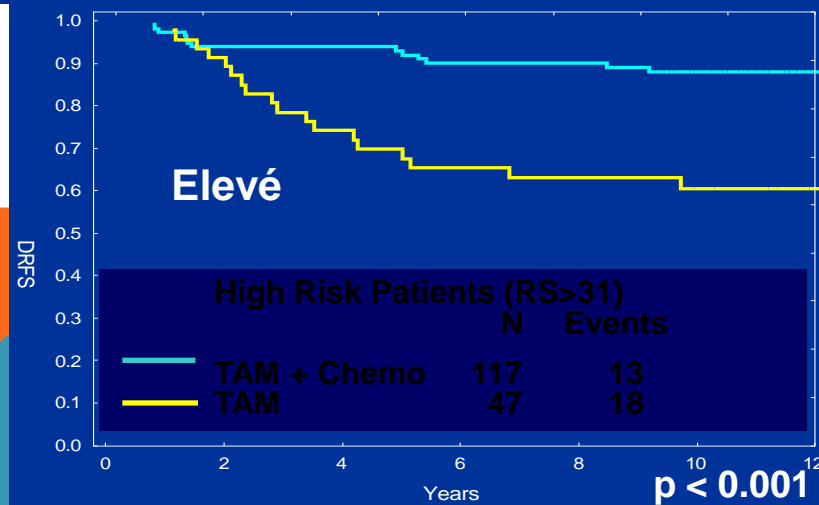
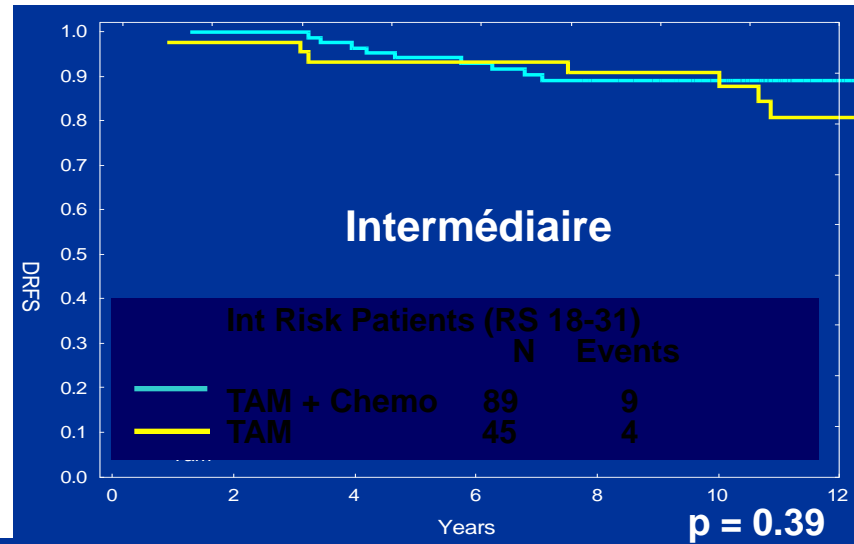
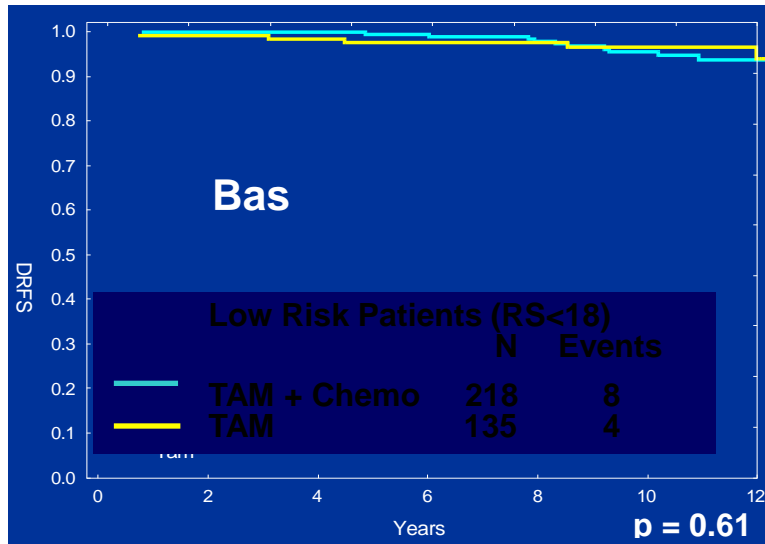
BIOMARQUEUR PREDICTIF

RESULTATS DE B-20

Tam vs Tam + Chimio



UN BIOMARQUEUR PREDICTIF



28%
avantage
d'ajouter la
chimio au
tamoxifene

TYPES DE BIOMARQUEURS: TISSUS

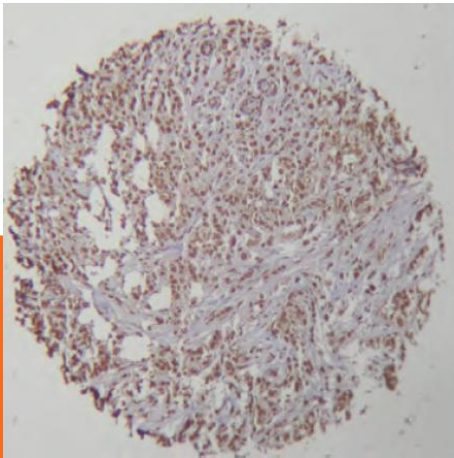
Tissus cancéreux

pourrait nécessiter une biopsie spéciale

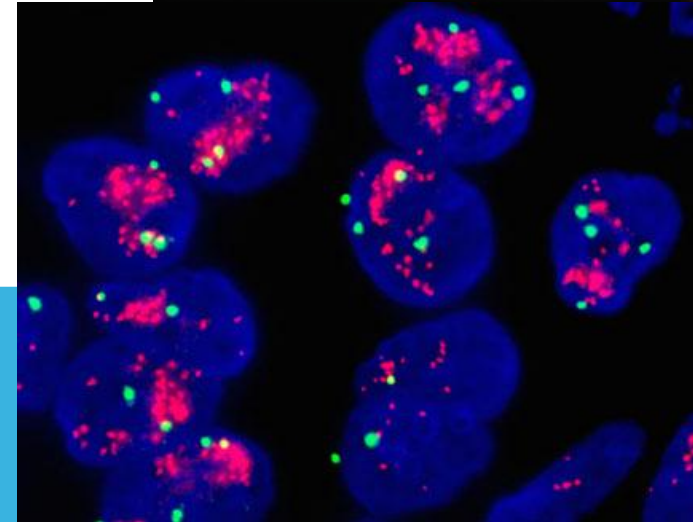
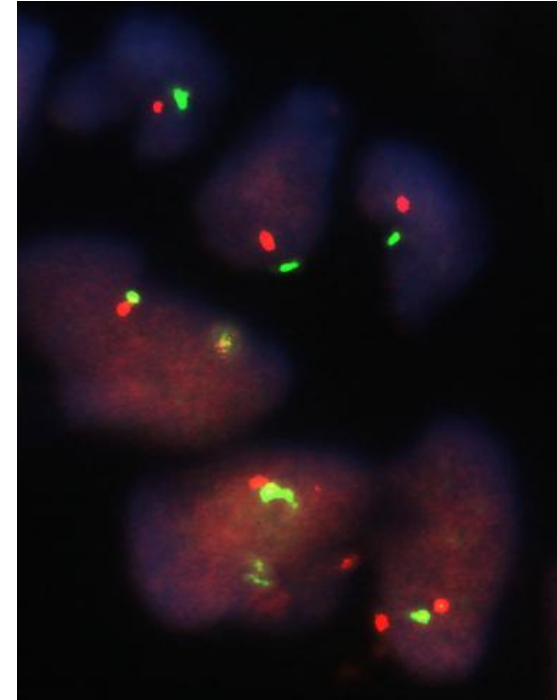
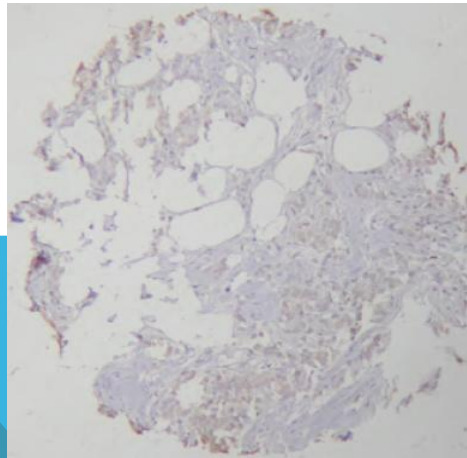
le spécimen de la résection chirurgicale

Expression/niveau de gènes ou protéines

Expression élevée



Expression basse



LA COLLABORATION DES PATIENT(E)S EST ESSENTIELLE!!!

BIOMARQUEURS SANGUINS

Plus facile à tester

Possibilité de dépister les cancers

Plus difficile à découvrir

Beaucoup de facteurs à contrôler:

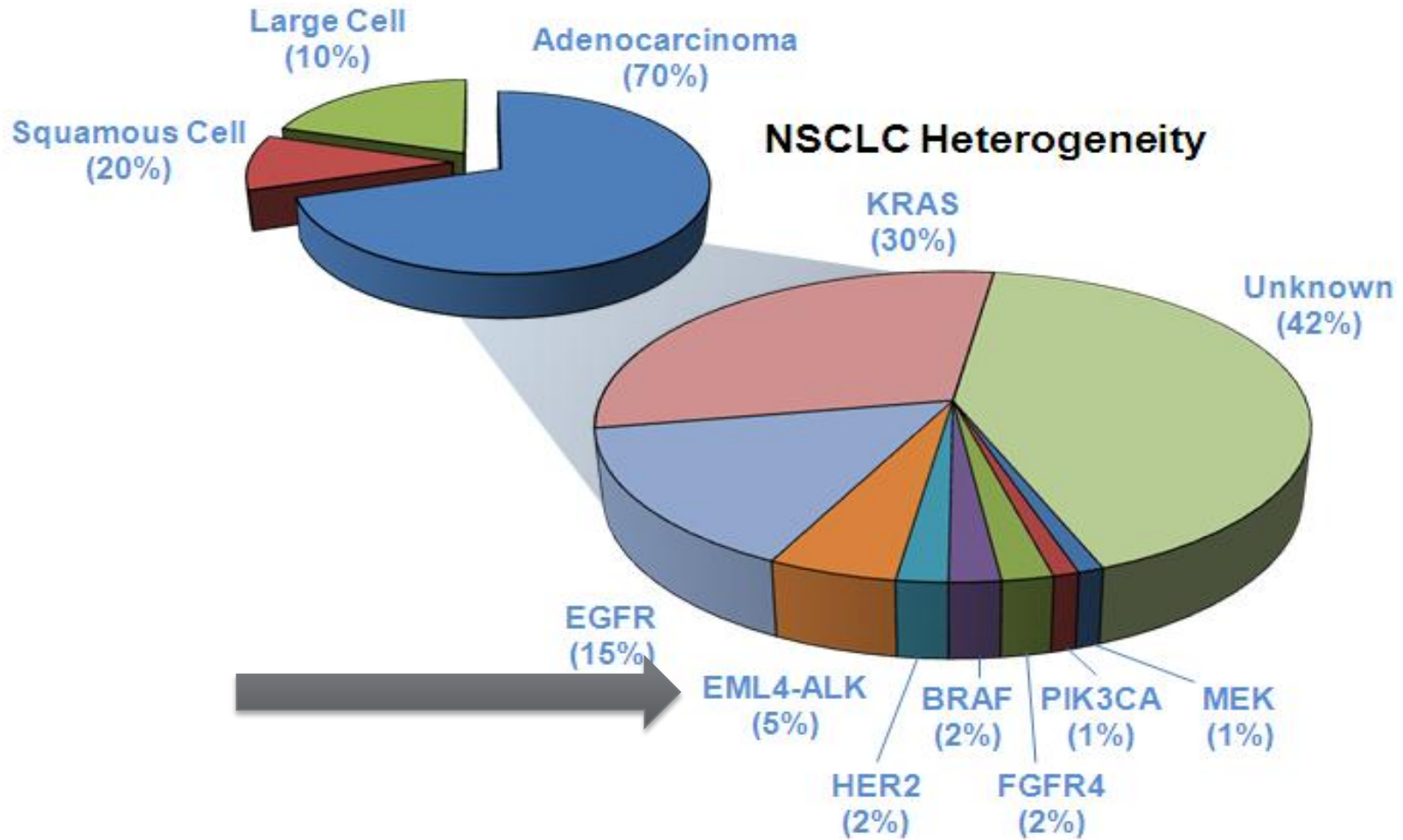
tubes, protocole de collection, diète, combien de temps avant la congélation

CEA, CA15.3, PSA, CA-125, AlphaFP

Recherche de mutations d'origine tumorale dans le sang

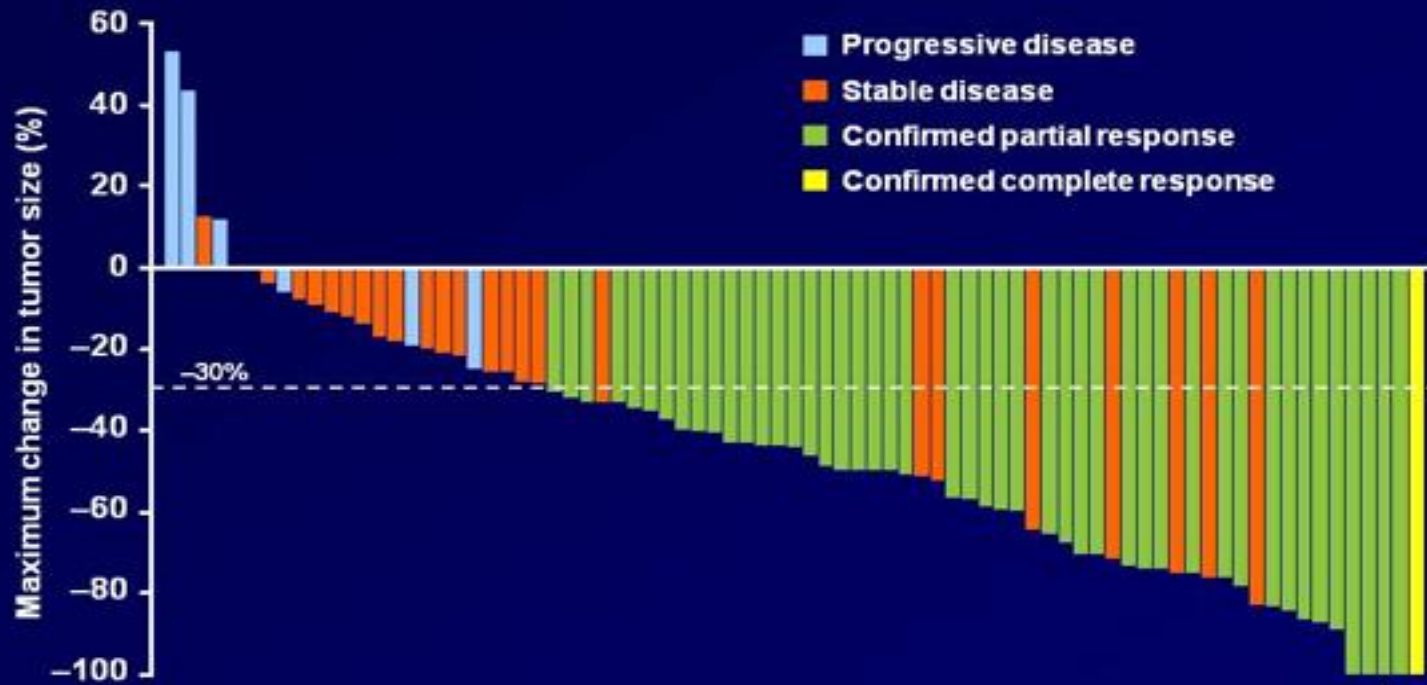
LA PROMESSE DES BIOMARQUEURS: L'HISTOIRE DU CRIZOTINIB

Lung Adenocarcinomas



LA PROMESSE DES BIOMARQUEURS: REALITÉ!

Tumor Responses to Crizotinib for Patients with *ALK*-positive NSCLC



*Partial response patients with 100% change have non-target disease present

SAVOIR A QUI DONNER LE TRAITEMENT!

LA PROMESSE DES BIOMARQUEURS: REALITÉ

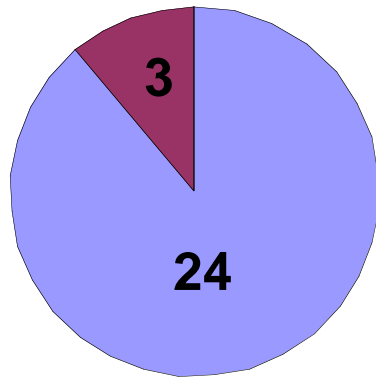
LE CETUXIMAB (ERBITUX): MEDICAMENT DANS LE
CANCER DU COLON AVANCE

TAUX de REPONSE DE 22%

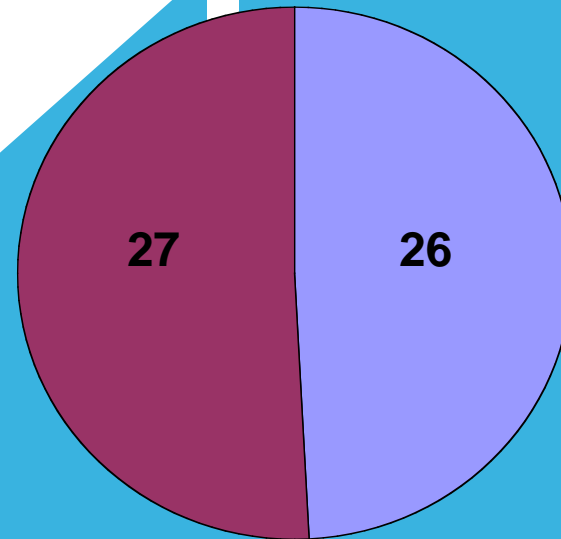
RECHERCHE DE MUTATIONS DANS LE GENE K-RAS
(environ 40% des cancers du côlon)



SAVOIR A QUI NE PAS DONNER LE MEDICAMENT!



Maladie contrôlée



Maladie progressive



ASCO Releases its First Provisional Clinical Opinion (PCO)

Patients with metastatic colorectal cancer who are candidates for anti-EFGR therapy should have their tumors tested for *KRAS* gene mutations, according to ASCO's first Provisional Clinical Opinion (PCO).

If a patient has a mutated form of the *KRAS* gene, the Society recommends *against* the use of anti-EFGR antibody therapy, based on recent studies indicating this treatment is only effective in patients with the normal (wild-type) form of the *KRAS* gene. It is estimated that 40% of patients with colon cancer have the *KRAS* mutation.

"Personalized medicine is the next frontier in cancer care," said Richard L. Schilsky, MD, ASCO President. "Using *KRAS* testing to guide colorectal cancer treatment is a prime example of where cancer care is heading."

"Basing cancer treatment on the unique genetic characteristics of the tumor or the individual with cancer will improve patient outcomes and help avoid unnecessary costs and side effects for patients who are unlikely to benefit," Dr. Schilsky added.

PCOs are intended to offer timely preliminary clinical direction to oncologists following the publication or presentation of potentially practice-changing data from major studies. ASCO's PCO on *KRAS* gene testing was given prior to the January 15-17, 2009 Gastrointestinal Cancers Symposium in San Francisco, California. The Symposium was co-sponsored by ASCO, the American Gastroenterological Association (AGA), the American Society for Radiation Oncology (ASTRO), and the Society of Surgical Oncology (SSO).

Among the 500 presentations was an important economic and scientific study that discussed the possibility of more than half a billion dollars in savings for the United States healthcare system. The study showed that routine testing for *KRAS* gene mutations in patients with metastatic colorectal cancer could save the U.S. health system up to \$604 million per year by identifying who would benefit from the drug cetuximab.

Information on the PCO is currently available on ASCO.org, and the entire report will be published in the next issue of the *Journal of Clinical Oncology* (JCO).

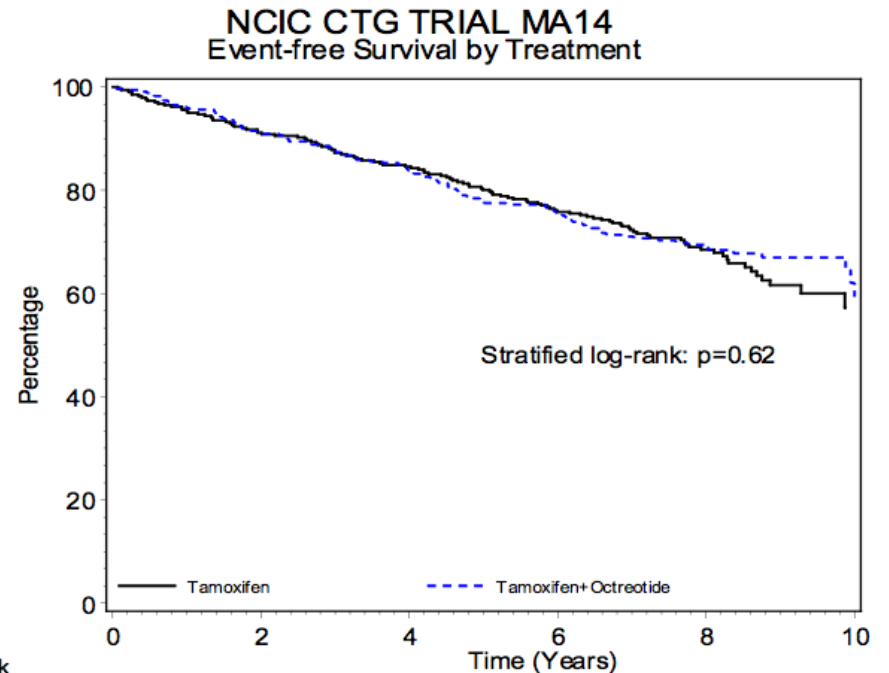
LES BIOMARQUEURS PRÉDICTIFS: RESSUSCITER UN MÉDICAMENT!

Treatment Schema:

R A N D O M I Z E	Arm 1	Tamoxifen 20 mg PO once daily for 5 years
	Arm 2	Tamoxifen 20 mg PO once daily for 5 years Octreotide LAR 90 mg IM monthly for 2 years

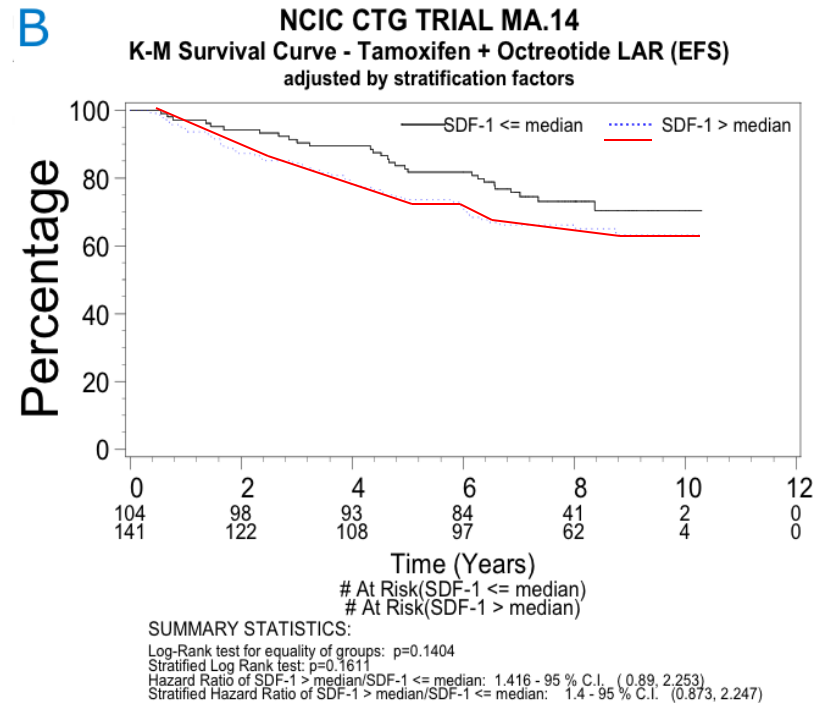
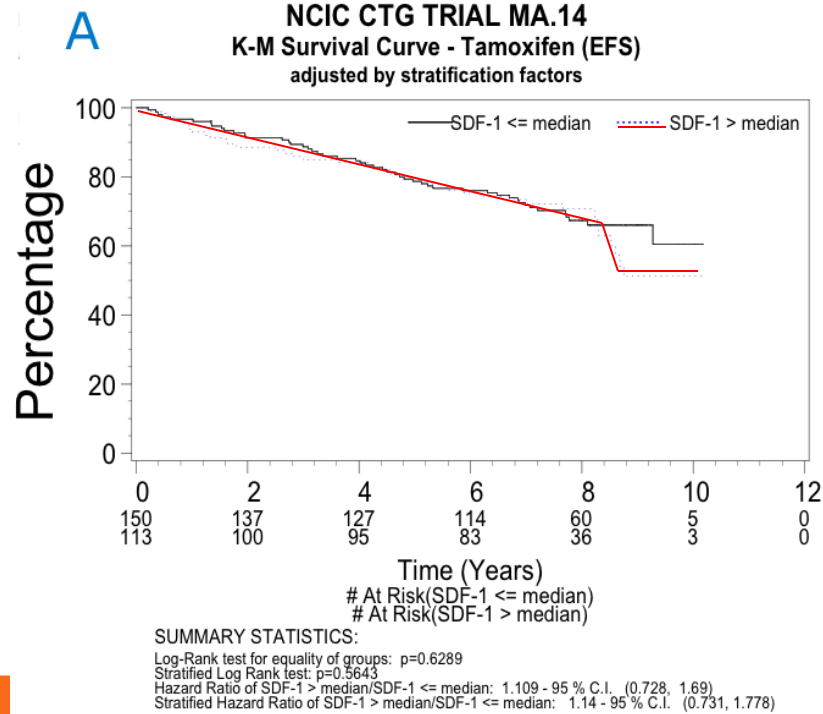
Or until recurrence or second malignancy is demonstrated

Sample size: 667 patients



AUCUNE DIFFERENCE: LE MÉDICAMENT N'EST PAS EFFICACE!

Un biomarqueur sanguin: niveaux de SDF-1



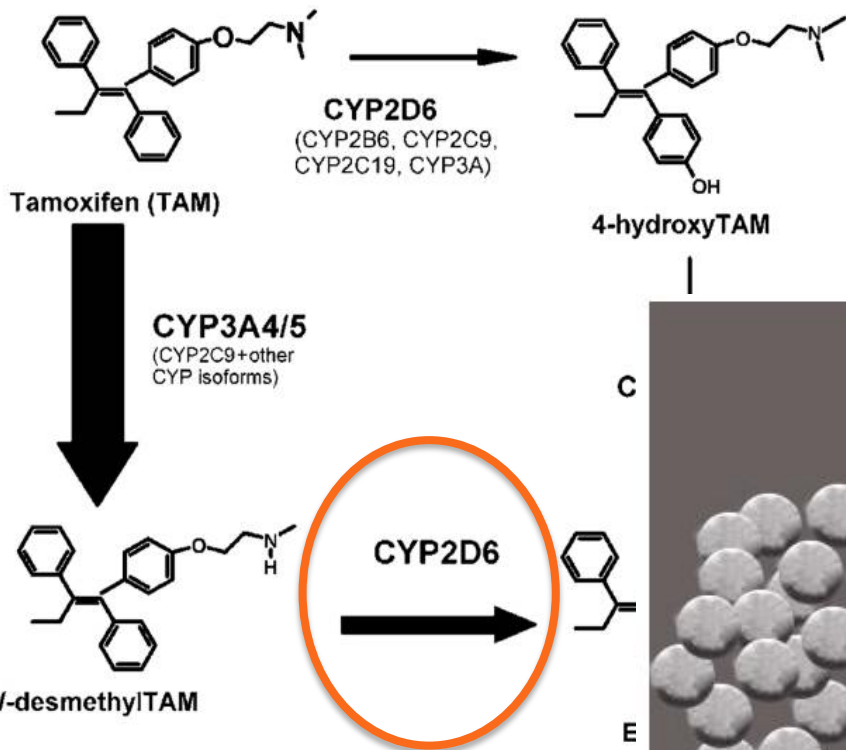
Un test sanguin peut personnaliser les traitements!

FAIRE ATTENTION!!

VALIDER, VALIDER, VALIDER

AVANT DE COMMENCER EN CLINIQUE!

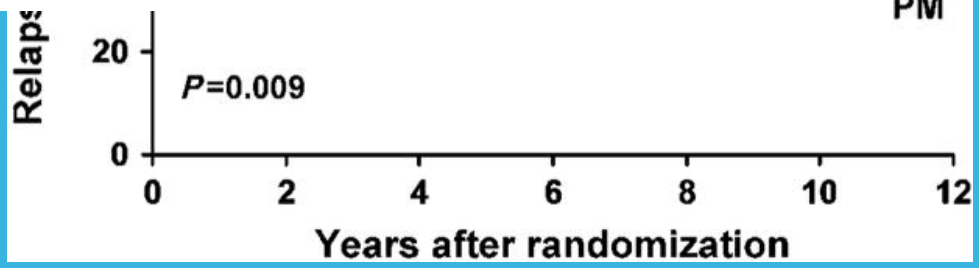
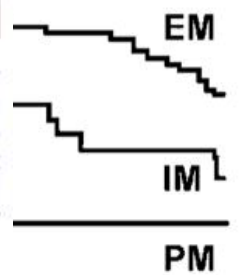




LE METABOLISME DES MEDICAMENTS

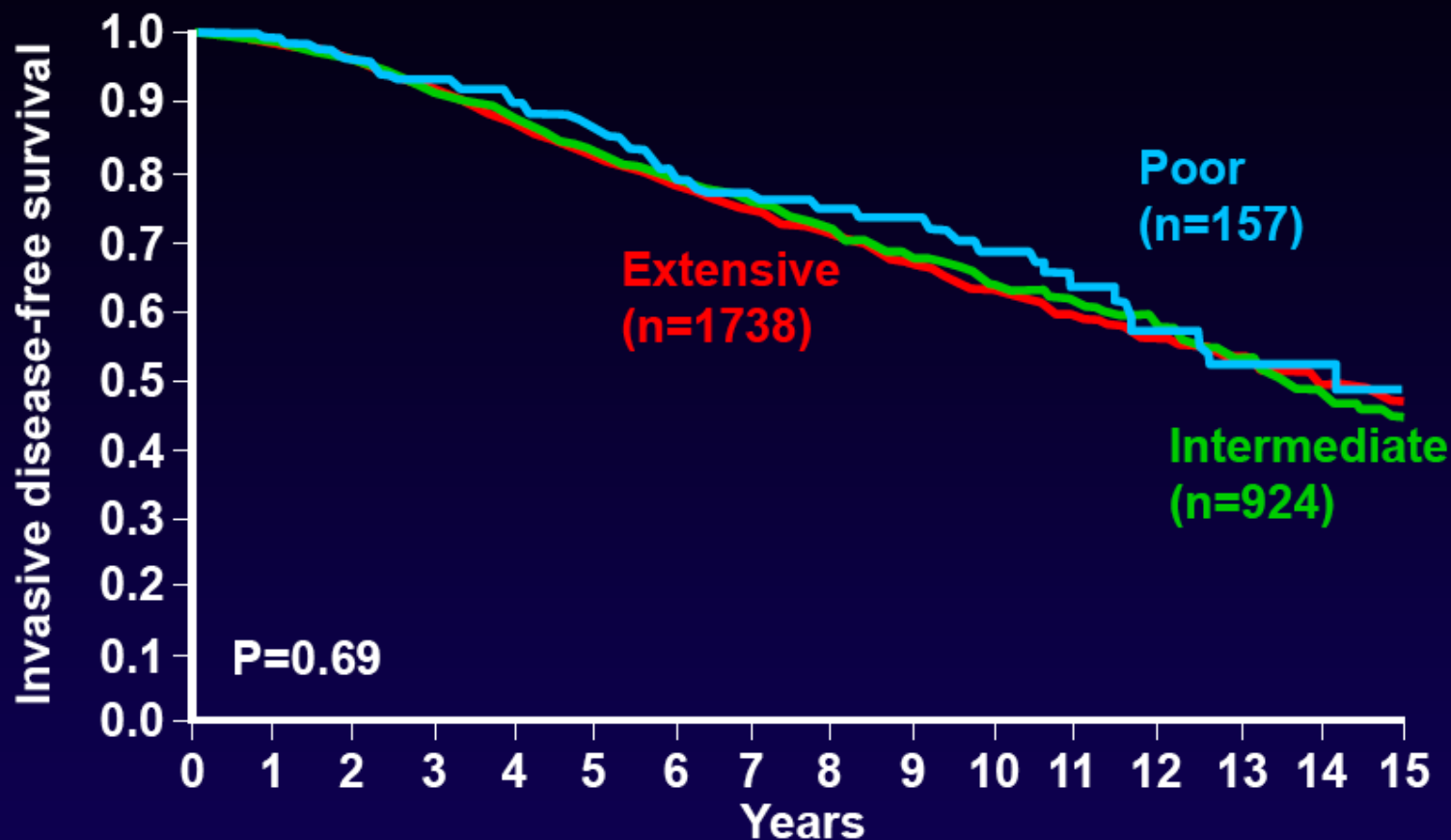


Mayo [Clinic](#) researchers have been prompted by the findings of a new study, to recommend a CYP2D6 gene testing for those postmenopausal women, who are about to begin with tamoxifen [therapy](#). The CYP2D6 gene is considered crucial for tamoxifen metabolism. It's believed that women with the inherited deficiency of the CYP2D6 gene are at an increased risk of early breast [cancer](#) as compared to the non-inherited deficiency women.



Goetz M et al
Breast Cancer
Res & Treatment
2007

All Sites, Overall Survival by CYP2D6 Metabolism



Adjusting for positive nodes and project site		
Factor	Hazard ratio	P-value
Project site	--	<0.0001
Positive nodes (4 vs. 0)	1.53	<0.0001
CYP2D6 (poor vs ext)	0.92	0.50

Q-CROC: UNE APPROCHE INNOVATRICE et COOPERATIVE

Q-CROC: Consortium en Recherche Clinique du Québec

Centre du cancer Segal (Montréal)

**Centre de recherche clinique et évaluative en oncologie
(CRCEO) (Québec)**

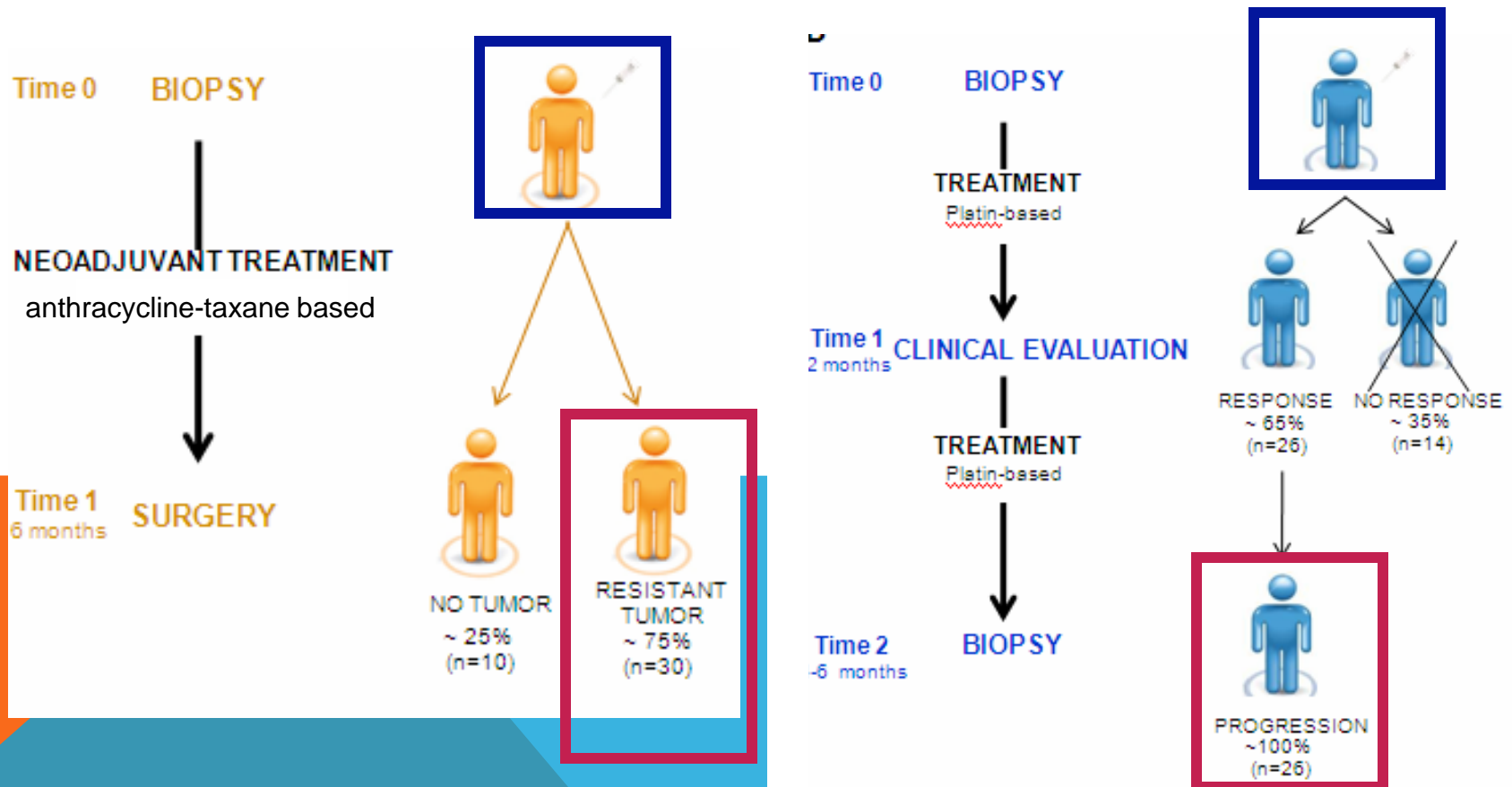
**Rassembler les centres d'oncologie du Québec dans une
nouvelle infrastructure favorisant la recherche**

OBJECTIF: VAINCRE LA RESISTANCE!

PROJETS Q-CROC: BIOPSIES DE TUMEURS AVANT ET APRÈS TRAITEMENT

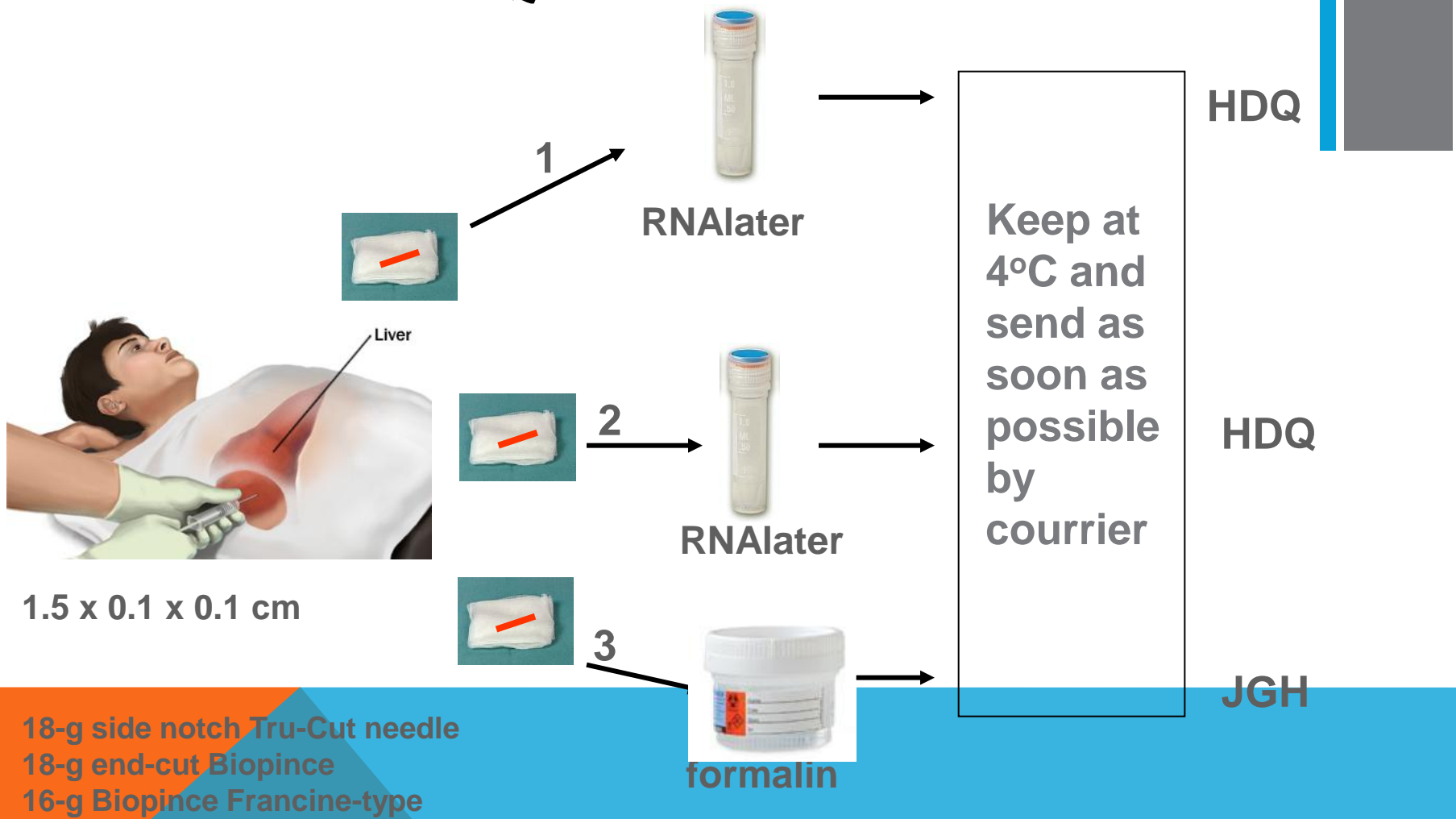
Le cancer devient de plus en plus résistant aux traitements?

Pourquoi? Comment vaincre cette résistance?





BIOPSIE HÉPATIQUE



- 18-g side notch Tru-Cut needle
- 18-g end-cut Biopince
- 16-g Biopince Francine-type

Q-CROC: CONSORTIUM EN RECHERCHE CLINIQUE DU QUEBEC

CENTRE DU CANCER SEGAL
CENTRE DE RECHERCHE CLINIQUE ET ÉVALUATIVE EN ONCOLOGIE
(CRCEO)

Q-CROC-01

Le cancer du côlon métastatique (Subvention du FRSQ)

Q-CROC-02

Lymphome Non-Hodgkiniens (NHL)

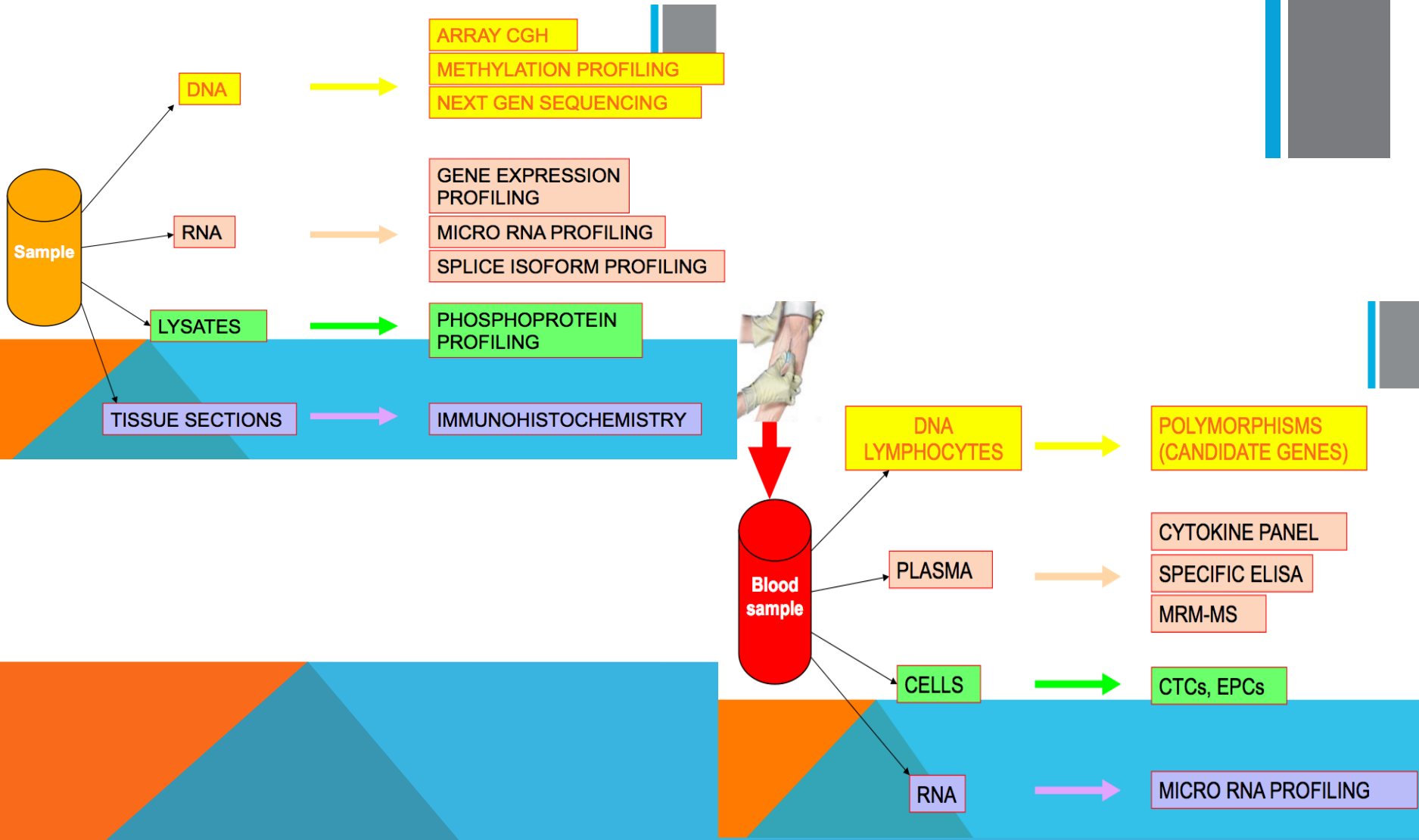
Q-CROC-03

Les cancers du sein triple négatifs (Subvention de Génome Québec)



Q-CROC

CONSORTIUM DE RECHERCHE EN ONCOLOGIE CLINIQUE DU QUÉBEC
QUEBEC - CLINICAL RESEARCH ORGANIZATION IN CANCER



CONCLUSION

La recherche sur les biomarqueurs est essentielle pour mieux comprendre qui doit être traité avec quel médicament

- éviter les toxicités chez les patient(e)s qui ne répondront pas au traitement
- sauver des coûts
- sauver du temps!!!

Une collaboration des patient(e)s absolument essentielle:

prélèvements des tissus et des prises de sang pour la recherche!

MERCI!

**UN GROS MERCI
AUX PATIENT(E)S!!!!**

